

## Full OEM overhaul for Dynapower, Stratopower, Eaton & Vickers hydraulic starters, OEM P/N L25105PXX

Over the years hydraulic starters have gained a doubtful reputation by failing repeatedly. Most of these failures could be rooted back to the use of non-OEM repairs and non-OEM spare parts.

In general the clutch, piston body and bearings of a hydraulic starter are the most likely to fail.

OEM spare parts, such as the original clutch, piston body and bearings, simply cannot be obtained in the aftermarket.

Therefore hydraulic starter repairs have been performed with re-used clutches, re-used piston bodies and non-OEM bearings along with self-developed repair procedures.

The predictable outcome of these unauthorized repair processes: more starter failures due to the limited quality of these repairs.

**When overhauled and installed correctly hydraulic starters can and will perform very reliable.**



VBR Turbine Partners are now in the position to offer a full OEM overhaul with new OEM replacement parts to restore the full integrity of hydraulic starters. We can also supply a complete new starter build with 100% OEM replacement parts and fully tested to the OEM specifications.

For more information or a request for quotation: [sales@vbr-turbinepartners.com](mailto:sales@vbr-turbinepartners.com)

### VBR Turbine Partners headquarters & warehouse

Industrieweg Oost 6 info@vbr-turbinepartners.com  
6662 NE Elst (Gld) Phone: +31(0)88 010 9000  
The Netherlands www.vbr-turbinepartners.com

### VBR Turbine Partners UK service office

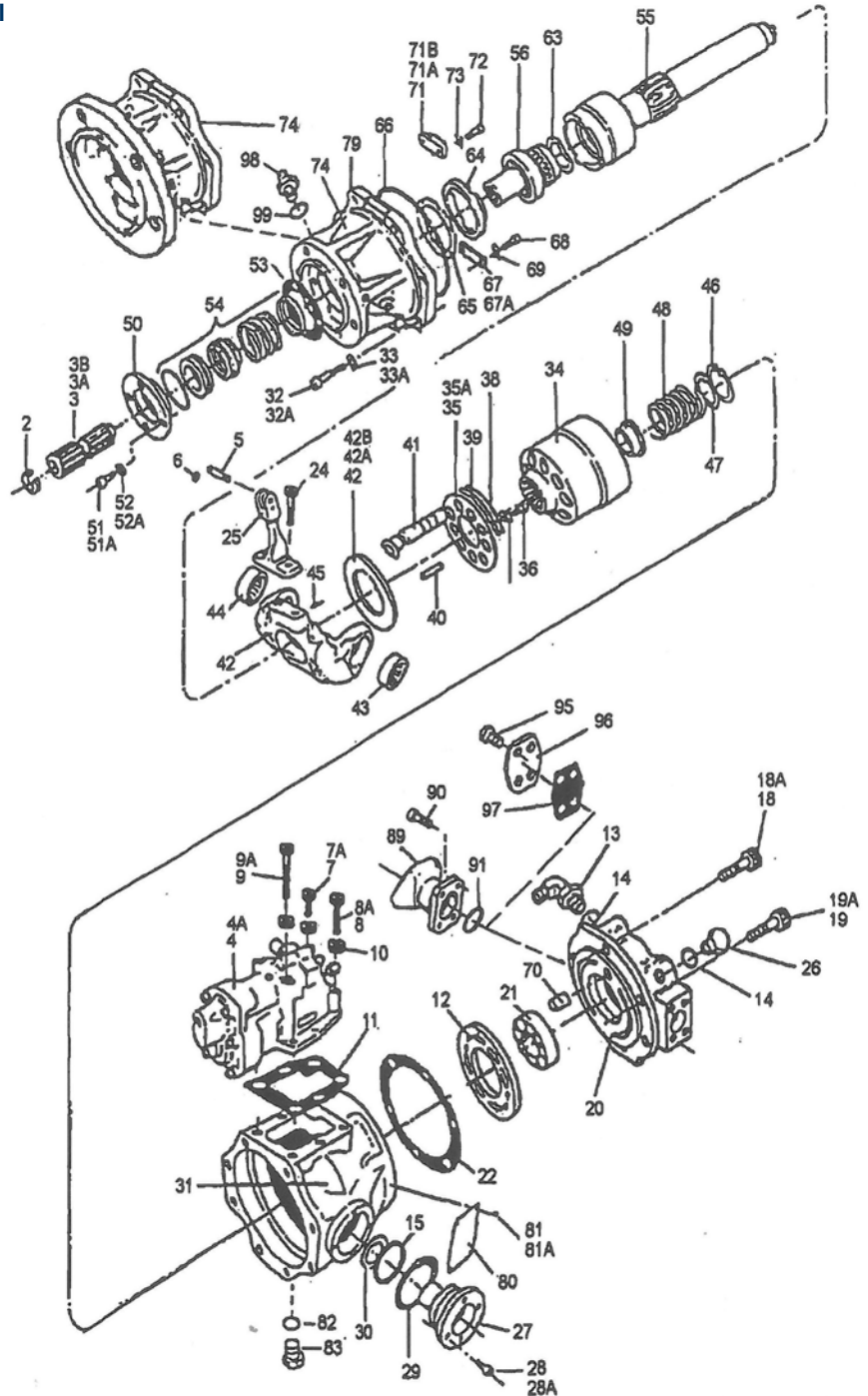
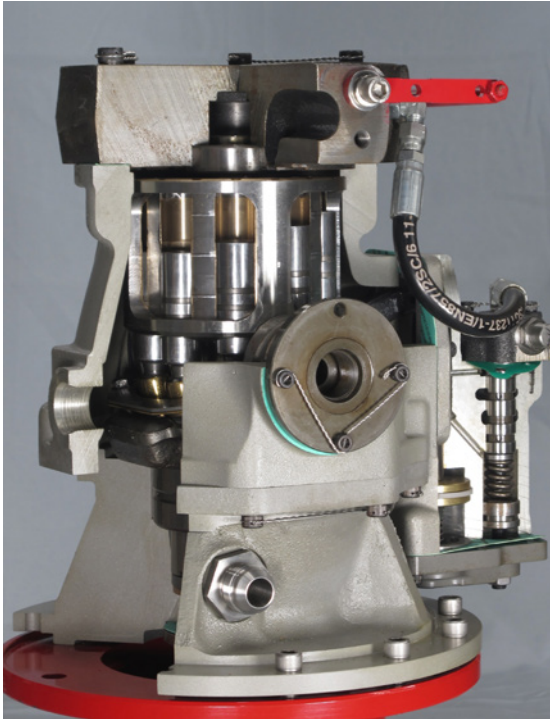
Woodhall, Westoby Lane vbr.uk@vbr-turbinepartners.com  
Barrow Upon Humber, Nth. Lincolnshire Phone: +44 1469 533 337  
DN19 7DJ United Kingdom www.vbr-turbinepartners.com

# Specifications of the L25105PXX full OEM overhaul and the OEM new starter build

A full OEM hydraulic starter overhaul means that all internal parts are replaced with new OEM parts except for:

- Item 4 – control (subject to inspection & test)
- Item 14 – end cover
- Item 31 – housing
- Item 42 – swash (subject to replacement when damaged)
- Item 74 – mounting flange

An OEM new starter build means that items 4, 14, 31, 42 and 74 will also be provided new.



Typical Variable Displacement Starter – Exploded View

Depending on your requirements VBR Turbine Partners are now in the position to offer you either a full OEM hydraulic starter overhaul or a new OEM hydraulic starter build for P/N L25105PXX.

For more information or a request for quotation:  
sales@vbr-turbinepartners.com

**VBR Turbine Partners FZCO Middle East service office**

PO Box 17573 vbr.me@vbr-turbinepartners.com  
536, Techno Park Phone: +971 488 067 66  
Jebel Ali, Dubai, UAE www.vbr-turbinepartners.com

**VBR Middle East Turbine Maintenance LLC**

PO Box 45841 info@vbr.ae  
Abu Dhabi Phone: +971 2645 8808  
United Arab Emirates www.vbr.ae