



VBR gas turbine control system retrofits



What are the benefits of a VBR gas turbine control system retrofit?

- Fully open & accessible gas turbine control systems
- Multiple available choices for hardware & software
- Full factory testing with a tailor-made digital GT engine model
- Plug & play installation & commissioning onsite
- Integrated advanced predictive health monitoring capabilities
- Enables data driven condition based maintenance on GT engines
- Supports extension of service intervals and the total life of GT engines
- Very cost effective compared to OEM or other third party retrofit alternatives
- Supported by education & training for the onsite operation & maintenance staff
- Certified retrofit project management

VBR gas turbine control system retrofit capabilities

Gas turbines supported for VBR controls retrofits		GT control systems suited for VBR controls retrofits
GE:	LM6000, LM2500/+, LM1600 (SAC & DLE)	Woodward NetCon, Micronet
Nuovo Pignone:	PGT25/+ (SAC & DLE)	Speedtronic Mk4, Mk5, Mk6, Mk6e
GE:	Frame 6B, Frame 7E, Frame 9E (SAC & DLN)	Allen-Bradley
Rolls-Royce:	Avon, RB-211, Spey	Turbotronix
Siemens:	SGT-100, SGT-200, SGT-400, SGT-600, SGT-700	Rustronic
Solar:	Centaur, Mars, Saturn	
Ruston:	Cyclone, Tornado, Typhoon	
Alstom:	GT10/B	

To learn more about cost effective high quality GT control system retrofits & technical audits contact VBR at controls@vbr-turbinepartners.com or by phone **+31 88 010 9050**

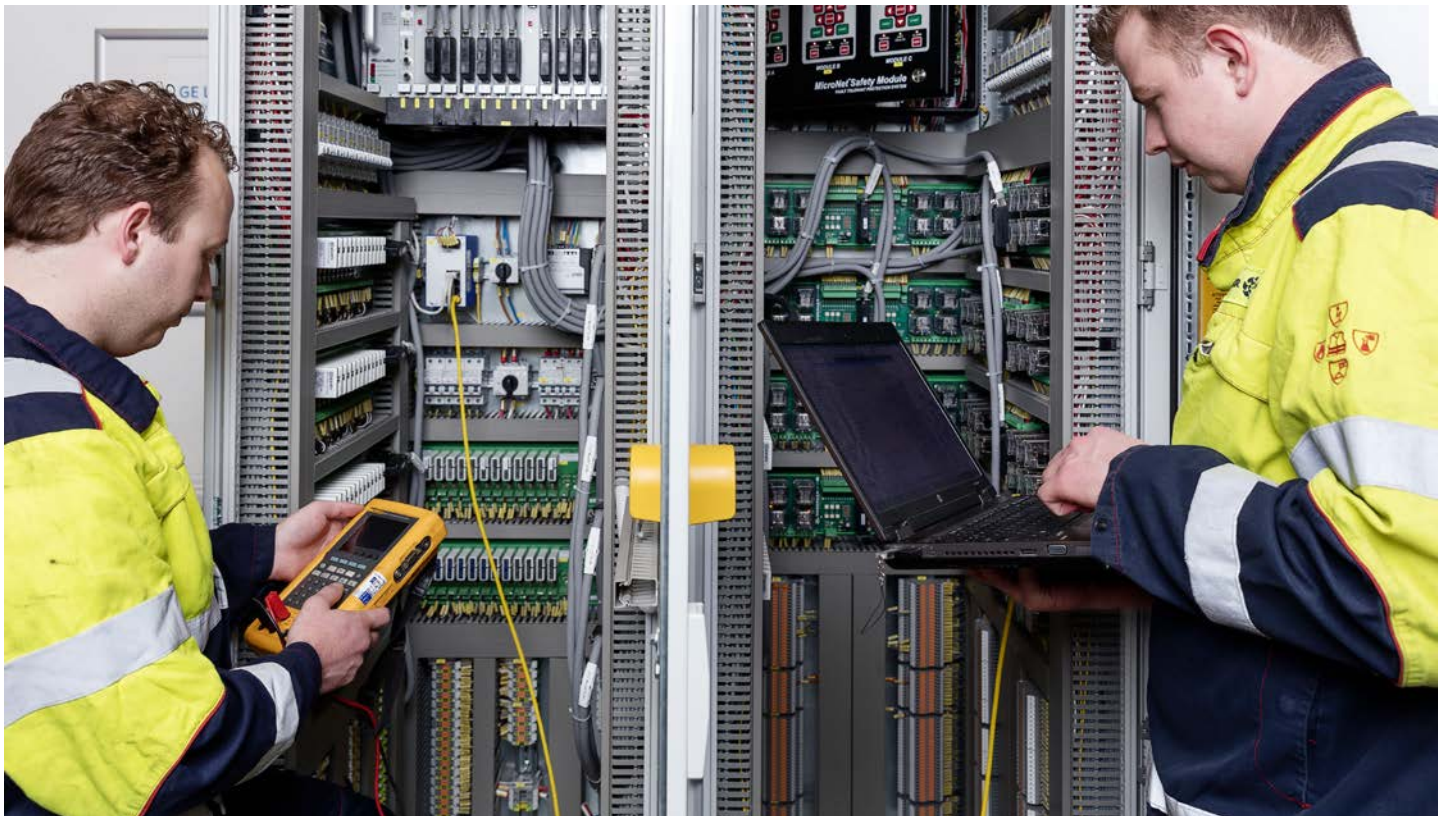
VBR Turbine Partners main office & warehouse
Industrieweg Oost 6
6662 NE Elst (Gld)
The Netherlands

Contact information
info@vbr-turbinepartners.com
Phone: +31(0)88 010 9000
www.vbr-turbinepartners.com





VBR gas turbine control system references



Reference list VBR control system retrofits & projects

Control system retrofit references

Offshore:

- LM1600
- LM 1600 compressor drives
- LM2500
- LM 2500 compressor drives
- CPU and receiver upgrades with entirely new software

Onshore:

- LM1600
- LM 1600 generator drives
- LM2500
- LM 2500 generator drives

Control system project references

- Technical audits
 - LM 6000 PD engines (compressor & generator drive)
 - LM 2500 DLE engines (compressor & generator drive)
 (Technical audit: full in-depth assessment of all C&I related topics as jittering, grounding, earth faults, calibrations & mapping combined with a full in-depth assessment of the entire control system.)
- HMI upgrades on
 - LM 1600
 - LM 2500 SAC & DLE
 - LM 6000 PC & PD
- Software modifications on all type of engines and control systems

To learn more about cost effective high quality GT control system retrofits & technical audits contact VBR at controls@vbr-turbinepartners.com or by phone **+31 88 010 9050**

VBR Turbine Partners main office & warehouse
Industrieweg Oost 6
6662 NE Elst (Gld)
The Netherlands

Contact information
info@vbr-turbinepartners.com
Phone: +31(0)88 010 9000
www.vbr-turbinepartners.com

