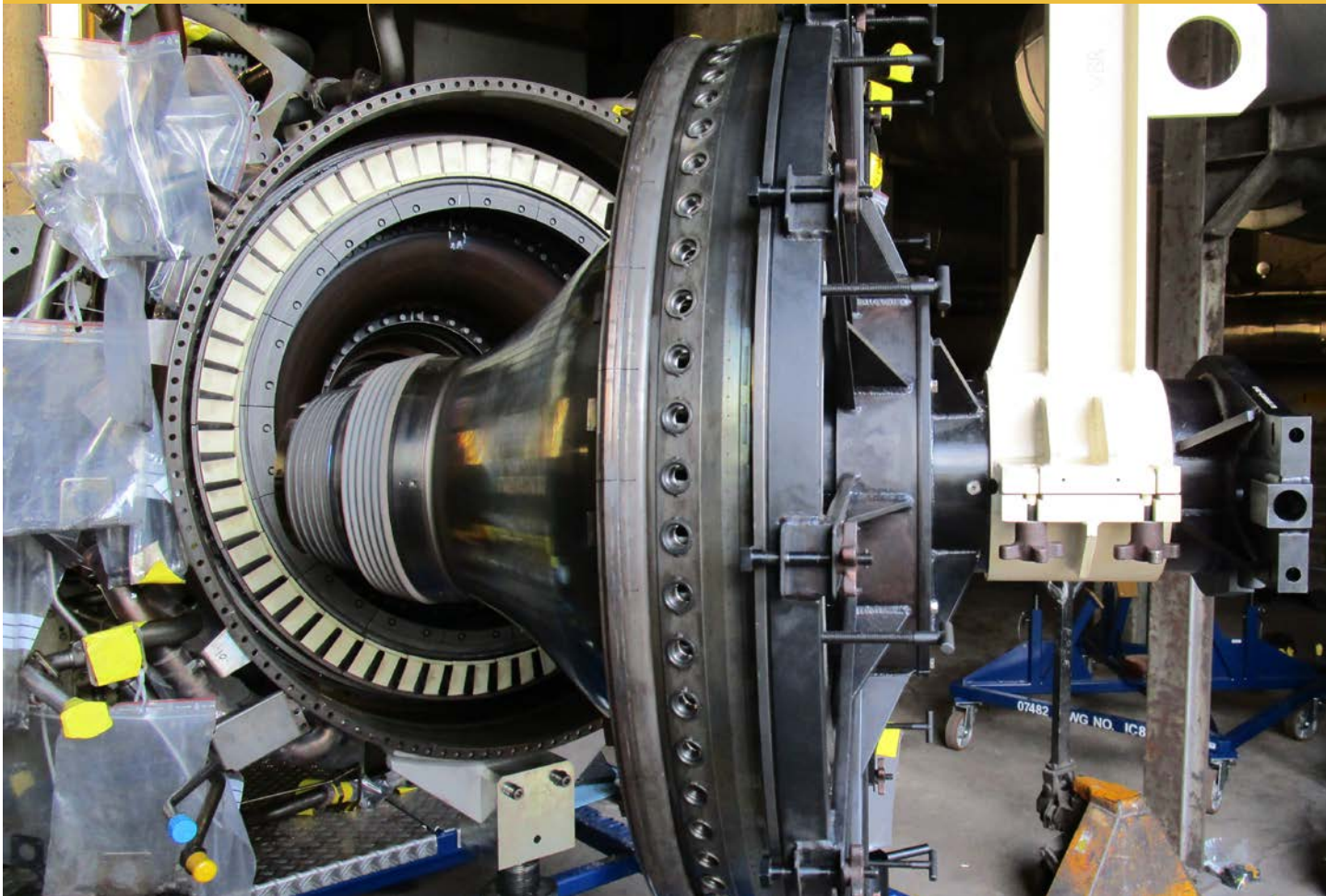




# VBR on-site hot section exchange & repair services

Our on-site hot section exchange services include specialized consultants, dedicated mechanical engineers, all required hot section exchange tooling and most required replacement parts for all LM2500(+) engine configurations.



**VBR Turbine Partners is a one-stop full service provider for on-site hot section exchanges and repairs. The benefits of performing these activities on-site by VBR are:**

- Quicker turnaround time for the hot section exchange
- Lower costs for the hot section exchange due to reduced engine downtime
- Wide repair / supplier network and experience to increase repair yield and reduce overall costs
- Customer choice between OEM authorized repairs/ parts and alternative repairs/ parts

To learn more about on-site LM2500(+) hot section exchange or repair capabilities contact VBR at [consultancy@vbr-turbinepartners.com](mailto:consultancy@vbr-turbinepartners.com) or by phone at **+31 88 010 9084**

VBR Turbine Partners main office & warehouse  
Industrieweg Oost 6  
6662 NE Elst (Gld)  
The Netherlands

Contact information  
[info@vbr-turbinepartners.com](mailto:info@vbr-turbinepartners.com)  
Phone: +31(0)88 010 9000  
[www.vbr-turbinepartners.com](http://www.vbr-turbinepartners.com)





# VBR engine hot section exchange capabilities and materials



**VBR engine & hot section exchange capabilities:**

<b>On-site hot section exchange / engine exchange with dedicated engineers &amp; tooling for:</b>
✓ LM2500 Base SAC / DLE
✓ LM2500 Plus SAC / DLE
✓ LM2500 Plus G4 SAC / DLE

**Available materials for on-site hot section exchanges / engine exchanges:**

<b>VBR has a complete LM2500 Base SAC rotatable hot section available:</b>
✓ SAC Combustor
✓ HPT Nozzle assembly stg.1
✓ HPT Nozzle assembly stg.2 (suitable for DLE as well)
✓ HPT Rotor (suitable for DLE as well)

**Additional remarks:**

- VBR can provide both Chromalloy manufactures single crystal airfoils or OEM manufactured airfoils, both new and in overhauled condition
- In case of a required hot section overhaul VBR can provide a LM2500 Base SAC lease GG/ GT to cover the downtime
- Hot section exchanges & overhauls can be also performed at the VBR facility in Elst, NL

To learn more about on-site LM2500(+) hot section exchange or repair capabilities contact VBR at [consultancy@vbr-turbinepartners.com](mailto:consultancy@vbr-turbinepartners.com) or by phone at **+31 88 010 9084**

VBR Turbine Partners main office & warehouse  
Industrieweg Oost 6  
6662 NE Elst (Gld)  
The Netherlands

Contact information  
[info@vbr-turbinepartners.com](mailto:info@vbr-turbinepartners.com)  
Phone: +31(0)88 010 9000  
[www.vbr-turbinepartners.com](http://www.vbr-turbinepartners.com)

